



Monarch Stone Company, Inc.

Building Stone Architectural Stone Landscape Stone

303-933-9657

Toll Free 888-933-9657

Mailing Address: P.O. Box 620216, Littleton, Colorado 80162

Fax: 303-933-2370 Mobile: 303-808-6320

www.MonarchStoneCompany.com

Installation of Natural Stone Thin Veneer

Natural Stone Thin Veneer may be applied to any concrete, masonry or wood surface.

Preparation

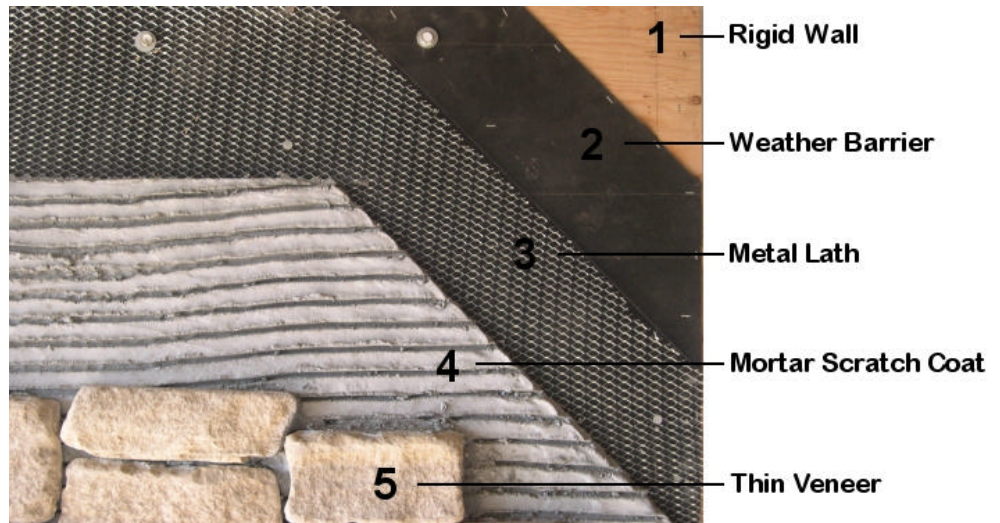
Painted concrete must first be sandblasted prior to installation. If unable to remove the paint, then fasten a galvanized metal lath securely to the wall, making sure to overlap the corners at least four inches.

Mortar Scratch Coat

Next apply a scratch coat of mortar mix $\frac{1}{2}$ " – $\frac{3}{4}$ " thick to the lath and score with horizontal grooves.

Weather Barrier

For wood surfaces first apply a vapor barrier over the wood and then attach a galvanized metal lath. Next apply the scratch coat as described above.



For Concrete Surfaces

For new concrete surfaces make sure to clean the surface first. The natural stone veneer can be applied directly to the concrete surface.

Mortar Mix

Mix a mortar mix of 2 parts clean sand and 1 part Type S mortar mix to a creamy consistency. This consistency will help in holding the stone until it sets. The use of an additive or bonding agent will add strength for bonding to the wall.

If the wall is dry, then dampen slightly prior to laying the stone. This will aide in allowing the mortar on the stone to set up and cure with a better bond.

Clean Stones of Dirt, Sand or Loose Material

Clean stones of any dirt, sand, or loose material. Dampen the backside of the stone.

Thin Coast of Mortar Mix

Apply a thin coat ($\frac{1}{2}$ " – 1") of mortar mix to stone and press it in place. Rotate the stone slightly to secure bond. Make sure to keep the stone as clean as possible from any drops of mortar. If this occurs, then let the mortar dry slightly, brush off and clean with a damp cloth.

Joints

Fill joints with a grout bag and tool them as to the desired depth and look.

Drystack Look Installation

Natural stone veneer can also be installed in a drystack look with no mortar joints.

Follow Building Codes

All stone must be installed according to local building codes. Check with your local building department prior to installation.